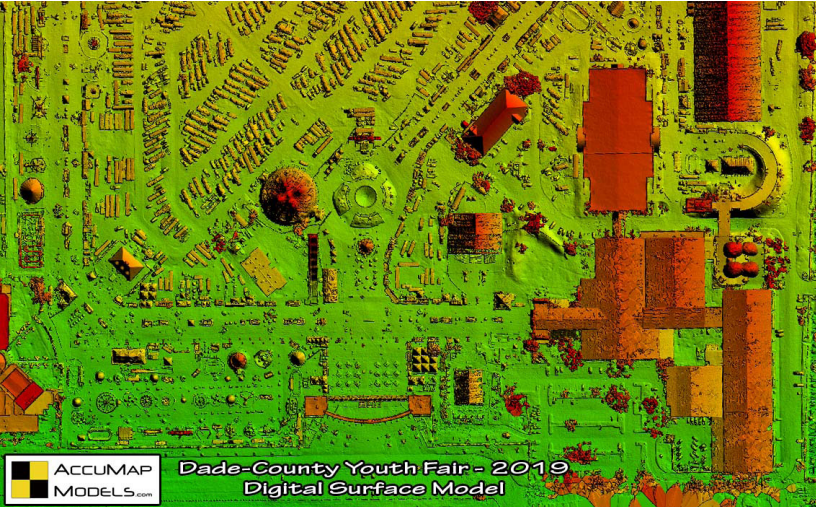


ACCUMAP  
MODELS.com



Dade-County Youth Fair - 2019  
Digital Surface Model

# CAPABILITY STATEMENT

## CORE COMPETENCIES

AccuMap Models creates 360 virtual tours, 3D Point Clouds, and Photogrammetry models, which can be viewed on the cloud or a computer with Pix4D or other point cloud viewer. Within the point cloud you can derive volumetric, linear, and spatial measurements, or the exact X,Y,Z location of any point within the model with 1-3 cm of accuracy. The hundreds of photos that create the 3D photogrammetry model can be retained as insurance proof in case of natural disasters or any damage should happen to the buildings or structure. All the data for this work is collected by FAA certified drone pilots, which in some cases, do not need to access the site, therefore eliminating the risk of accidents within the site.

## SERVICES

- 3D Photogrammetry [BIM] Models
- Digital Surface Models (DSM)
- Digital Terrain Models (DTM)
- Orthomosaics and Contour Maps
- Int. Laser Scanning (0.1% accuracy)
- 360 Photography and Virtual Tours
- Thermal and Aerial Photography
- Multispectral Agriculture Analysis
- FAA Certified Drone Pilots
- Fully Insured

## COMPANY DATA

**CERTIFICATIONS:**  
DBE, MBE, LDB

**NAICS Codes:**  
541370; 541922; 541611; 512110

**PSC Codes:**  
T008, T009, T010, T014, T015, R699

**DUNS:** 012737492  
**CAGE:** 8H8Q1



## CONTACT INFO

**AccuMap Models**

Kelvin Gonzalez  
Located in Miami  
Serving South Florida

305-812-8300  
AccuMapModels.com  
kgonzalez@AccuMapModels.com